

Engine Number Guide

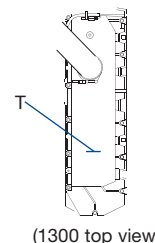
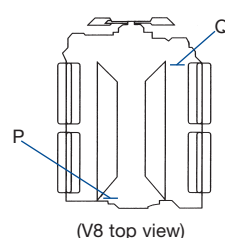
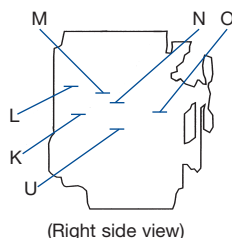
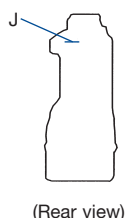
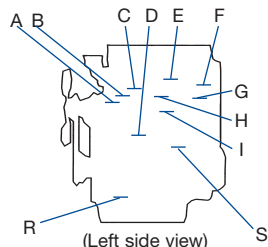
Engines < 2 litre/cylinder (produced post 1974)

Engine number guide		
Example:	PJ 12345 U 123456P	
Engine family and type code	PJ	1106D-E66TA
Parts list number of SOS order reference number	12345	
Country of manufacture code	U	UK
Engine serial number	123456	
Year of manufacture code	P	2007

Year of manufacture code									
This code indicates the calendar year of manufacture. The letters I, O, Q, R and Z will not be used.									
A	1974	L	1984	Y	1994	K	2003	X	2013
B	1975	M	1985	A	1995	L	2004	Y	2014
C	1976	N	1986	B	1996	M	2005	A	2015
D	1977	P	1987	C	1997	N	2006	B	2016
E	1978	S	1988	D	1998	P	2007		
F	1979	T	1989	E	1/1/99-31/3/99	R ¹ /S	2008		
G	1980	U	1990	F	1/4/99-31/12/99	T	2009		
H	1981	V	1991	G	2000	U	2010		
J	1982	W	1992	H	2001	V	2011		
K	1983	X	1993	J	2002	W	2012		

Country of manufacture code							
This code indicates the country in which the basic engine was manufactured.							
A	Argentina	H	Group	L	Italy	SA	South Africa
B	Brazil ²	HC	China ²	M	Mexico	T	Turkey
C	Australia	HM	Indonesia	MX	Mexico	U	UK ²
D	Germany	HK	Iraq	N	USA ²	V	Pakistan
E	Spain	HU	Uruguay	P	Poland	W	Iran
F	France	J	Japan	R	China ²	X	Peru
G	Greece	K	Korea	S	India	Y	Yugoslavia

Where to find your engine number



Engine type	Position	Engine type	Position	Engine type	Position
3.152	M	4.318	F	Perama/100/400 Series	O
4.108	A	4.41	H	Phaser/1000/1100(A/B/C) Series	H or J
4.154/200 Series	B	6.247	C or F	1104D	S
4.165	B or G	6.354	D	850 Series	D or R
4.203	J or N	V8.540	Q	1204E	S
4.212/4.248/900 Series	C	Peregrine/1300 Series	I or O	1206E	R
1106D including PK	R	V8.640	P	1300 Series	T
4.236	C or L	700/800 Series	K	1500 Series	U
				1600 Series	U

Notes

¹ A number of engines were built with the letter 'R' as the year of manufacture code. In the middle of January 2008, the year of manufacture code was changed to the letter 'S'. If your full engine serial number ends with the letter 'R', Perkins Engines Company Limited will recognise the full engine serial number.

² Represents current manufacturing facilities.

If the letter 'R' appears after the country code this represents a remanufactured engine (ie UR = UK remanufactured engine).

Engine family and type code - small/medium engines

A	Phaser/1004 Series	D	1103C Range	HM	403C-17	N	4.318 Series	TV	6.3724
AA	1004-4	DC	1103C-33	HN	404C-15	NC	4.318	TW	6.3544
AB	1004-4T	DD	1103C-33T	HP	404C-22	ND	4.3182	TX	C6.3544
AC	1004-4T	DE	1103C-33TA	HR	404C-22T		1104D Range	TY	H6.3544
AD	1004e-4TW		1103B Range	J	4.203 Series	NH ² /NP	1104D-E44T	TZ	HT6.3544
AE	Fed. CC	DF	1103B-33	JD	4.203	NJ ² /NR	1104D-E44TA	U	700 Series
AF	1004-40S	DG	1103B-33T	JE	D4.203	NK	1104D-44	UA	704.30
AG	1004-4		1103A Range	JF	G4.203	NL	1104D-44T	UB	704.26
AH	1004-4T	DJ	1103A-33	JG	4.2032	NM	1104D-44TA	UC	704.30
	New 1000 Series	DK	1103A-33T		850 Series	NP	1104D-E44T		800C Range
AJ	1004-40	E	4.108 Series	JR	854E-E34TA wall flow	NR	1104D-E44TA	UE	804C-33
AK	1004-40T	ED	4.108			P	1106 Range A,C,D	UF	804C-33T
AL	1004-40TA	E	400F Range	JS	854F-E34T wall flow	PJ	1106D-E66TA		800D Range
AM	1004-40T	EG	402F-05			PK	1106C-E66TA ¹	UK	804D-33
AP	1004-40	EH	403F-07	JT	854F-E34T wall flow	PP	1106A-70T	UL	804D-33T
AQ	1004-40T	EJ	403F-11			PR	1106A-70TA	UM	804D-33TA
AR	1004-42	EK	403F-15	JU	854F-E34TA	PT	1106C-70TA	V	1106C Range
AS	1004-42	EL	403F-15T	K	Perama/100 Series	PU	1106D-70TA	VK	1106C-E60TA
AT	1004-40TA	EN	404F-22	KA	102.04	PV	1104C-E70TA	X	V8.540 Series
B	Prima/500 Series	EP	404F-22T	KB	103.06	PW	1106D-E70TA	XA	V8.510
BA	504-2	G	4.154/200 Series	KC	103.09	R	6.247 Series	XB	TV8.510
BB	504-2T	GA	4.154	KD	103.10	RA	6.247	XC	V8.540
	1206 Range	GB	4.135	KE	103.15		1104C Range	XE	TV8.540
BK	1206E-E66TA wall flow	GC	4.182	KF	104.19	RE	1104C-44		1103D Range
		GD	4.25	KH	103.13	RF	1104C-E44	XG	1103D-E33
BL	1206E-E70TTA wall flow	GE	4.3	KL	103.07	RG	1104C-44T	XH	1103D-E33T
			400D/A Range	KN	102.05	RH	1104C-E44T	XJ	1103D-E33TA
BM	1206F-E70TA	GG	402D-05	KR	104.22	RJ	1104C-44TA	XK	1103D-33
BN	1206F-E70TTA	GH	403D-07	KS	103.11	RK	1104C-E44TA	XL	1103D-33T
C	3.152 Series	GJ	403D-11	L	4.236 Series		1104A Range	XM	1103D-33TA
CA	P3	GK	403D-15	LA	4.212	RR	1104A-44	Y	Phaser/1006 Series
CB	3.144	GL	403D-15T	LD	4.236	RS	1104A-44T	YA	1006-6
CC	P3.144	GM	404D-15	LE	G4.236	RT	1104A-44TA	YB	1006-6T
CD	3.152	GN	404D-22	LF	4.248	SD	Sabre CC6.68	YC	1006-6T
CE	D3.152	GP	404D-22T	LG	4.2482	T	6.354 Series	YD	1006e-6T
CF	G3.152	GR	404D-22TA	LH	C4.236	TC	6.354	YE	Fed. CC
CG	P3.152	GS	403D-17	LJ	T4.236	TD	H6.354	YF	1006-60S
CJ	3.1522	GT	403A-11	LM	4.41	TE	T6.354		New 1000 Series
CK	T3.152C	GU	403A-15		1204E Range	TF	HT6.354	YG	1006-60
CM	3.1524	GV	404A-22	MK	1204E-E44TA wall flow	TG	6.3541	YH	1006-60T
CN	T3.1524	H	4.165 Series			TH	T6.3541	YJ	1006-60TA
	900 Series	HA	4.165	ML	1204E-E44TA wall flow	TJ	6.3542	YK	1006-60TW
CR	903-27		400C Range			TK	C6.3542	Z	V8.640 Series
CP	903-27	HB	402C-05		1204F Range	TP	T6.3543	ZA	V8.640
CS	903-25	HD	403C-07	MT	1204F-E44TA	TR	6.372	ZB	TV8.640
CT	903-27S	HH	403C-11	MU	1204F-E44TTA	TT	TC6.3541		
		HL	403C-15			TU	T6.3544		

A	Air to air charge cooling	E	Electronic	H	Horizontal	T	Turbocharged
C	Compensated	F	Federal emissions	N	Narrow front end	U	Unit injection
CC	Charged cooled	FF	Federal	P	Timing chain	V	V form
D	Direct Injection	G	Gasoline/gas	S	Spark ignition	W	Water to air charge cooling

Notes

¹ PK Series engines are derived from the 1106D Range platform but are only Stage II EU 2007 generator sets emissions compliant.

² Not available from 2014.

Peterborough products may show a finishing list on the engine plate, eg F1895. It is very important to quote this when spare parts are required.

Engine family and type code - large engines

	4006 Range	DGB	4012-46TAG2 (A)		2300 Range	TGF	2206TAG5	WP	1306-E76T
DIE	4006TESI	DGD	4012-46TAG3 (A)	FGA	2306TAG1	TGH	2206TAG6	WQ	1306-E76TA
DIF	4006TESI	DGL	4012-46TAG0A	FGB	2306TAG2	W	1300 Series Peregrine	WR	1306-E87T
DIH	4006TRS	DGM	4012TWG	FGD	2306TAG3			WS	1306-E87TA EP pre Jan 2010 IOPU pre June 2010
DIJ	4006TRS	DGK	4012-46TWG2 (A)		2800 Range	WB	1306-8T		
DGA	4006TAG1	DGN	4012-46TWG3 (A)	HGA	2806TAG1 (16 litre)	WC	1306-8TA		
DGB	4006-23TAG2 (A)	DGV	4012-46TWG4 (A)				WD	1306-7T pre June 2010	
DGD	4006-23TAG3 (A)	DGP	4012TEG	HGB	2806TAG2 (16 litre)		1306-E87T/TA post June 2010	WGD	1306A-E87TAG3
DGM	4006TWG	DGR	4012TEG2				WD		WGE
DGP	4006TEG		4016 Range	JGA	2806TAG1 (A) (18 litre)			WGH	1306A-E87TAG6
	4008 Range	DIE	4016TESI			WE	1306-7TA		1500 Series
DIE	4008TESI	DIF	4016TESI	JGB	2806TAG2 (A) (18 litre)	WF	1306-8T NGD	LGA	1506A/C-E88TAG1
DIF	4008TESI	DIG	4016E61-TRS				WG	1306-8TA NGD pre Jan 2010	LGB
DIH	4008TRS	DIH	4016TRS	JGD	2806TAG3 (18 litre)			LGD	1506A/C-E88TAG3
DIJ	4008TRS	DIJ	4016TRS				WG	1306C-E87TA post Jan 2010	LGE
DGL	4008TAG	DGL	4016TAG		2500 Range			LGF	1506A-E88TAG5
DGA	4008TAG (A)	DGA	4016TAG1 (A)	MGA	2506TAG1	WH	1306-9T NGD		1600 Series
DGB	4008TAG (A)	DGB	4016TAG2 (A)	MGB	2506TAG2	WJ	1306-9TA NGD	XGA	1606D-E93TAG1
DGK	4008TWG2	DGK	4016TWG2	MGD	2506TAG3		1300 Series EDi	XGB	1606D-E93TAG2
	4012 Range	DGR	4016TEG1/2 (A)	MGE	2506TAG4	WK	1306-E76T	XGD	1606D-E93TAG3
DIE	4012TESI	DGP	4016-61TRG1 (A)		2206 Range	WL	1306-E76TA	XGE	1606A/D-E93TAG4
DIF	4012TESI	DGW	4016-61TRG2 (A)	TGB	2206TAG2	WM	1306-E87T	XGF	1606A/D-E93TAG5
DGA	4012-46TAG1 (A)	DGX	4016-61TRG3 (A)	TGD	2206TAG3	WN	1306-E87TA		

61	Capacity in litres	E	External water circuit	I	Intercooled	S (SI)	Spark ignition
A	Air to air	E	Electronic	M	Marine	T	Turbocharged
CHP	Combined heat and power	G	Genset	R	Remote cooled	W	Water

1300 Series (Stafford)

From January 2010 Electropak (EP) and June 2010 Industrial Open Power Unit (IOPU) the engine numbering format for 1300 Series engine range changed to bring it into line with 2000 and 4000 Series engines.

Engine number guide			
Example:	W G H F 7004 N 12345 U		
1300 Series engine	W	Differentiator for customer specific options (Build List number)	7004
Generator set application (D for IOPU)	G	USA country of origin base engine	N
Rating (eg TAG6)	H	Unique serial number	12345
6 cylinders	F	Year of manufacture	U

Engine family and type code			
Build list ID pre January 2010	Build list ID from January 2010	Product type	Speed
1300 Series EP			
WS5360	WGDF7002	1306C-E87TAG3	1500 rpm
WS5361	WGEF7003	1306C-E87TAG4	1500 rpm
WS5358	WGFF7007	1306C-E87TAG5	1500 rpm
WS5362	WGHF7004	1306C-E87TAG6	1500 rpm
WS5359	WGDF7008	1306C-E87TAG3	1800 rpm
WS5357	WGEF7009	1306C-E87TAG4	1800 rpm
WS5363	WGDF7005	1306C-E87TAG3	1500/1800 rpm
WS5364	WGEF7006	1306C-E87TAG4	1500/1800 rpm

Build list ID pre June 2010	Build list ID from June 2010	Product type	Gross rating kWm @ rpm
1300 Series IOPU			
WR4424	WDMF7100	1306-E87T	153.0 @ 2200
WP4423	WDNF7101	1306-E76T	156.5 @ 2400
WR4425	WDPF7102	1306-E87T	168.0 @ 2200
WS4426	WDQF7103	1306-E87TA	186.5 @ 2000
WS4427	WDRF7104	1306-E87TA	186.5 @ 2200
WS4580	WDSF7105	1306-E87TA	197.5 @ 2100
WS4428	WDTF7106	1306-E87TA	197.5 @ 2100
WS5093	WDUF7107	1306-E87TA	197.5 @ 2200
WS5095	WDVF7108	1306-E87TA	197.5 @ 2200
WS5405	WDWF7109	1306-E87TA	223.5 @ 2200
WS5404	WDXF7110	1306-E87TA	246.0 @ 2000

Engine family and type code	
Build list ID	Product type
1306A Range	
WGDF	1306A-E87TAG3
WGEF	1306A-E87TAG4
WGHF	1306A-E87TAG6

1500 Series (Seguin)

Engine number guide			
Example:	L G F F 1010 N 12345 U		
1500 Series engine	L	Differentiator for customer specific options (Build List number)	1010
Generator set application	G	Country of manufacture	N
Rating (eg TAG5)	F	Unique serial number	12345
6 cylinders	F	Year of manufacture	U

Engine family and type code	
Build list ID	Product type
1500 Series EP	
LGAF	1506A/C-E88TAG1
LGBF	1506A/C-E88TAG2
LGDF	1506A/C-E88TAG3
LGEF	1506A-E88TAG4
LGFF	1506A-E88TAG5

1600 Series (Stafford)

Engine number guide			
Example:	X G D F 7147 N 12345 W		
1600 Series engine	X	Differentiator for customer specific options (Build List number)	7147
Generator set application	G	USA country of origin base engine	N
Rating (eg TAG3)	D	Unique serial number	12345
6 cylinders	F	Year of manufacture	W

Engine family and type code	
Build list ID	Product type
1600 Series EP	
XGAF	1606D-E93TAG1
XGBF	1606D-E93TAG2
XGDF	1606D-E93TAG3
XGEF	1606A/D-E93TAG4
XGFF	1606A/D-E93TAG5

From the 1 January 2008 the engine numbering format for large engines changed. The two numbers used previously to determine the number of cylinders per engine, have been replaced by one letter. The following letters will define the number of cylinders:

- 6 cylinder engine F will replace 06 ● 12 cylinder engine M will replace 12
- 8 cylinder engine H will replace 08 ● 16 cylinder engine R will replace 16

2000 Series Electronic (Seguin from February 2014/Stafford pre February 2014)

From February 2015 the country of manufacture code changed from 'U' to 'N'.

Engine number guide			
Example:	T G A F 0019 N 00178 A		
2000 Series engine	T	Engine specification number	0019
Generator set application	G	Country of manufacture	N
Rating (eg TAG1)	A	Build line number	0178
6 cylinders	F	Year of manufacture	A

Engine family and type code		
Build list ID pre January 2009	Build list ID from January 2009	Product type
2206 range		
Not applicable	TGBF	2206TAG2 (13 litre)
Not applicable	TGDF	2206TAG3 (13 litre)
Not applicable	TGFF	2206TAG4 (13 litre)
Not applicable	TGHF	2206TAG5 (13 litre)
2300 range		
FGA06	FGAF	2306TAG1 (14 litre)
FGB06	FGBF	2306TAG2 (14 litre)
FGD06	FGDF	2306TAG3 (14 litre)

Engine family and type code		
Build list ID pre January 2008	Build list ID from January 2008	Product type
2500 range		
MGA06	MGAF	2506TAG1 (15 litre)
MGB06	MGBF	2506TAG2 (15 litre)
MGD06	MGDF	2506TAG3 (15 litre)
MGE06	MGEF	2506TAG4 (15 litre)
2800 range		
HGA06	Not applicable	2806TAG1 (16 litre)
HGB06	Not applicable	2806TAG2 (16 litre)
JGA06	JGAF	2806TAG1 (A) (18 litre)
JGB06	JGBF	2806TAG2 (18 litre)
JGD06	JGDF	2806TAG3 (18 litre)

4000 Series (Stafford)

Engine number guide

Example:	DGB F 0081 U 00017 B		
4000 Series engine	D	Fixed build number (0000 means configured product)	0081
Generator set application	G	Country of manufacture	U
Rating (eg TAG2)	B	Build line number	0017
6 cylinders	F	Year of manufacture	B

Engine family and type code - Diesel

Build list ID pre January 2008	Build list ID from January 2008	Product type
4006 range		
DGA06	Not applicable	4006TAG1
DGB06	DGBF	4006/4006-23TAG2 (A)
DGD06	DGDF	4006/4006-23TAG3 (A)
DGM06	Not applicable	4006TWG
DGP06	Not applicable	4006TEG
4008 range		
DGL08	DGLH	4008TAG
DGA08	DGAH	4008TAG1 (A)
DGB08	DGBH	4008TAG2 (A)
DGK08	Not applicable	4008TWG2
4012 range		
DGL12	Not applicable	4012TAG
DGA12	DGAM	4012/4012-46TAG1 (A)
DGB12	DGBM	4012/4012-46TAG2 (A)
DGD12	DGDM	4012-46TAG3 (A)
N/A	DGLM	4012-46TAG0A
DGM12	Not applicable	4012 TWG
DGK12	DGKM	4012/4012-46TWG2 (A)
DGN12	DGNM	4012-46TWG3 (A)
N/A	DGVM	4012-46TWG4 (A)
DGP12	Not applicable	4012TEG
DGR12	Not applicable	4012TEG2
4016 range		
DGL16	DGLR	4016TAG
DGA16	DGAR	4016TAG1 (A)
DGB16	DGBR	4016TAG2 (A)
DGK16	DGKR	4016TWG2
DGR16	DGRR	4016TEG1/2 (A)
Not applicable	DGPR (Introduced July 2010)	4016-61TRG1 (A)
Not applicable	DGPR Introduced July 2010)	4016-61TRG2 (A)
Not applicable	DGPR Introduced July 2010)	4016-61TRG3 (A)

Engine family and type code - Gas

Build list ID pre January 2008	Build list ID from January 2008	Product type
4006 range		
DIE06	DIEF	4006TAG1
DIF06	DIFF	4006TESI
DIH06	DGDF	4006TRS
DIJ06	Not applicable	4006TRS
4008 range		
DIE08	DIEH	4008TESI
DIF08	DIFH	4008TESI
DIH08	DIHH	4008TRS
DIJ08	DIJH	4008TRS
4012 range		
DIE12	DIEM	4012TESI
DIF12	DIFM	4012TESI
4016 range		
DIE16	DIER	4016TESI
DIF16	DIFR	4016TESI
DIG16	DIGR	4016E61-TRS
Not applicable	DIHR (Build List ID from Jan 2009)	4016TRS
Not applicable	DIJR (Build List ID from Jan 2009)	4016TRS

Notes:

- A letter 'A' after the engine type equals the first evolution of that product, eg TAG1A
- The letters 'DBB' in the serial number signify a long engine replacement in a diesel or gas 4000 Series engine

2000/3000 Series Mechanical (Shrewsbury)

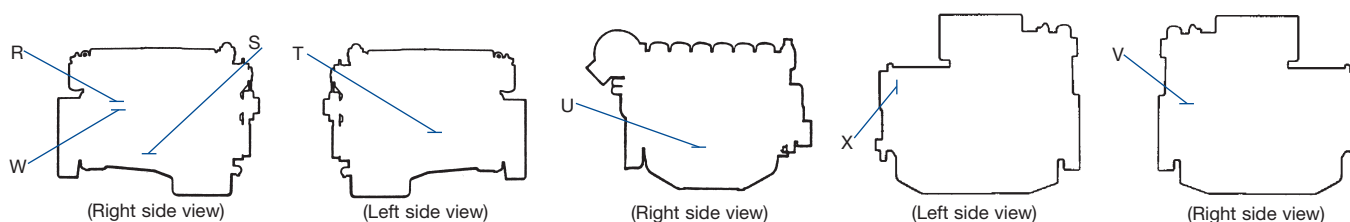
Engine number guide			
Example:		SG A 06 0010 U 0001 Y	
Engine application	SG	Country of manufacture	U
Engine family and type code	A	Build line number	0001
Number of cylinders	06 = 2000 Series, 08/12 = 3000 Series	Year of manufacture	Y
Engine specification number	0010		

Engine family and type code							
Family: SA Automotive		SLB	2000 Series	Family: SF Forklift		SGK	TWG2
SAA	300TX	SLC	3008 Series	SFA	T1	SGL	TAG
SAB	320MX	SLD	3012 Series	SFB	T2	SGM	TAG5
SAC	335TX	SLE	3008 Marine	SFC	TA	Family: SH Horizontal	
SAE	350E	SLG	3008 / 3012SI	SFD	TW	SHA	TWH
SAG	375TX	Family: SI Gas		Family: SG Generator set		Family: SP Plant	
SAJ	340TX2	SIA	SI	SGA	TAG1A	SPA	T
SAK	380TX2	SIB	SI Gas Unit	SGB	TAG2	SPB	T1
SAL	410TX2	SIC	TSI CHP	SGC	TAG2A	SPC	T2
Family: SB Short Block		SID	TSI Gas Unit	SGD	TAG3A	SPD	TA
SBA	TX	SIE	TWSI CHP	SGE	TAG4	SPE	TAP
SBB	2000 Series	SIF	TWSI Gas Unit	SGE	TAG4	SPJ	TP
SBC	3008 Series	Family: SM Marine		SGF	TG	SPK	TTA
SBD	3012 Series	SMA	M600T1	SGG	TG1A	SPL	TTAP
Family: SL Long Engine		SMB	M700T1	SGH	TG2A	SPM	TW
SLA	TX / Euro 2	SMC	M800T1	SFJ	TTAG	SPP	TW1

Shrewsbury Product (produced pre 1994)

Engine number guide			
Example:		8C 27655 U 88900 W	
Engine family and type code	8C	Build line number	88900
Engine specification number	27655	Year of manufacture	W
Country of manufacture	U		

Engine family and type code		Engine type	Position
8BT, 8CTA, 8DTW	Eagle	Eagle/2000 Series	R
8CTA	Eagle TX	3008 Series	T
8BT, 8CTA/TTA, 8DTW, 8ESI, 8GTW-H	2000 Series	3012 Series	S
4AT, 4BTA, 4ESI	3008/CV8	2300/2500/2800 Series	W
4CTi	Condor Marine	4006/4008 Series	U
6ATA, 6CTW, 6DT, 6ESI	3012/CV12	4012/4016 Series	V or X



Asia

Singapore

Perkins Engines (Asia Pacific) Pte Ltd
14 Tractor Road
Singapore 627973
Tel: +65 6828 7469
Fax: +65 6828 7414

China

Perkins Industrial Power Systems-Shanghai
20/F, Lei Shing International Plaza,
1319 West Yan'an Road,
Shanghai 200050
China
Tel: +86-21-22160704
Fax: +86-21-52136624

Americas

North America

Perkins Engines Inc
N4 AC 6160
PO Box 610
Mossville, IL 61552-0610, USA
1-888-PERK-ENG
Tel: +1 309 578 7364
Fax: +1 309 578 7329

South America

Perkins Motores do Brasil Ltda
Rua Alexandre Dumas
1711 Edificio Birmann 11 4 Andar
CEP 04717-004 São Paulo - SP
Brasil
Tel: +55 11 2109 2038
Fax: +55 11 2109 2089



THE HEART OF EVERY GREAT MACHINE

Europe, Middle East and Africa

Perkins Engines Company Limited
Peterborough PE1 5FQ
United Kingdom
Telephone +44 (0)1733 583000
Fax +44 (0)1733 582240

www.perkins.com